

Jan 19 2005 09:10:53 AM

WELDING SYMBOLS

WELD SIZE $\frac{1}{4}$ LINEAL INCHES OF WELD
 $\frac{3}{16}$ NOTE
 $2-8$ C/C DIM.
 LENGTH OF WELD

ARROW POINTS TO MEMBER TO BE BEVELED
 FULL PENETRATION - $\frac{1}{4}$ BACKING BAR

ARROW POINTS TO MEMBER TO BE BEVELED
 BACKGOUGE
 ROOT OPENING
 GROOVE ANGLE
 FULL PENETRATION - $\frac{1}{4}$ BACKGOUGE

ARROW POINTS TO MEMBER TO BE BEVELED
 DEPTH OF BEVEL
 EFFECTIVE THROAT
 PARTIAL PENETRATION
 ROOT OPENING
 GROOVE ANGLE
 FIELD WELD

BILL OF MATERIAL

ADVANCE	MARK	QUAN.	SHAPE	LENGTH	REMARKS	WT.	WEIGHT
MILL #		TOTAL				UNIT	TOTAL
7-HR4		ONE	RAILING			280	282
7-HR4		1	PIPE 1/2 STD	56 0	L/O A53	152	152
pp94		2	PIPE 1/2 XSTG	3 8	L/O A53	13	27
pp146		4	PIPE 1/2 XSTG	3 0	L/O A53	11	44
pp85		1	PIPE 1/2 XSTG	3 4	L/O A53	12	12
a397		1	L4x3x1/4	0 3	A36	1	1
p441		5	PL 1/2x2 1/2	0 9 1/2	A572-50	3	17
p333		2	PL 1/2x2 1/2	0 7 1/2	A572-50	3	5
p466		1	PL 1/4x4	6 11 5/16	A36	24	24
FIELD BOLTS							
		1	1/2 Dia A325N	0 2	1BVL, 1HD WAS		
		14	3/4 Dia A325N	0 2 1/2	1BVL, 1HD, WA		

Total weight :282

REVISION & DISTRIBUTION BOX

REV.	DATE	DESCRIPTION	BY	TO APP'L	TO SHOP	TO FIELD
△						
△						
△						
△						
A		ISSUED FOR APPROVAL	PDI			

DRAWINGS ARE SUBMITTED FOR APPROVAL IN ACCORDANCE WITH AISC MANUAL NINTH EDITION - PAGE 5-229 PARAGRAPH 4.2 AND PAGE 5-250 SECTION 4.

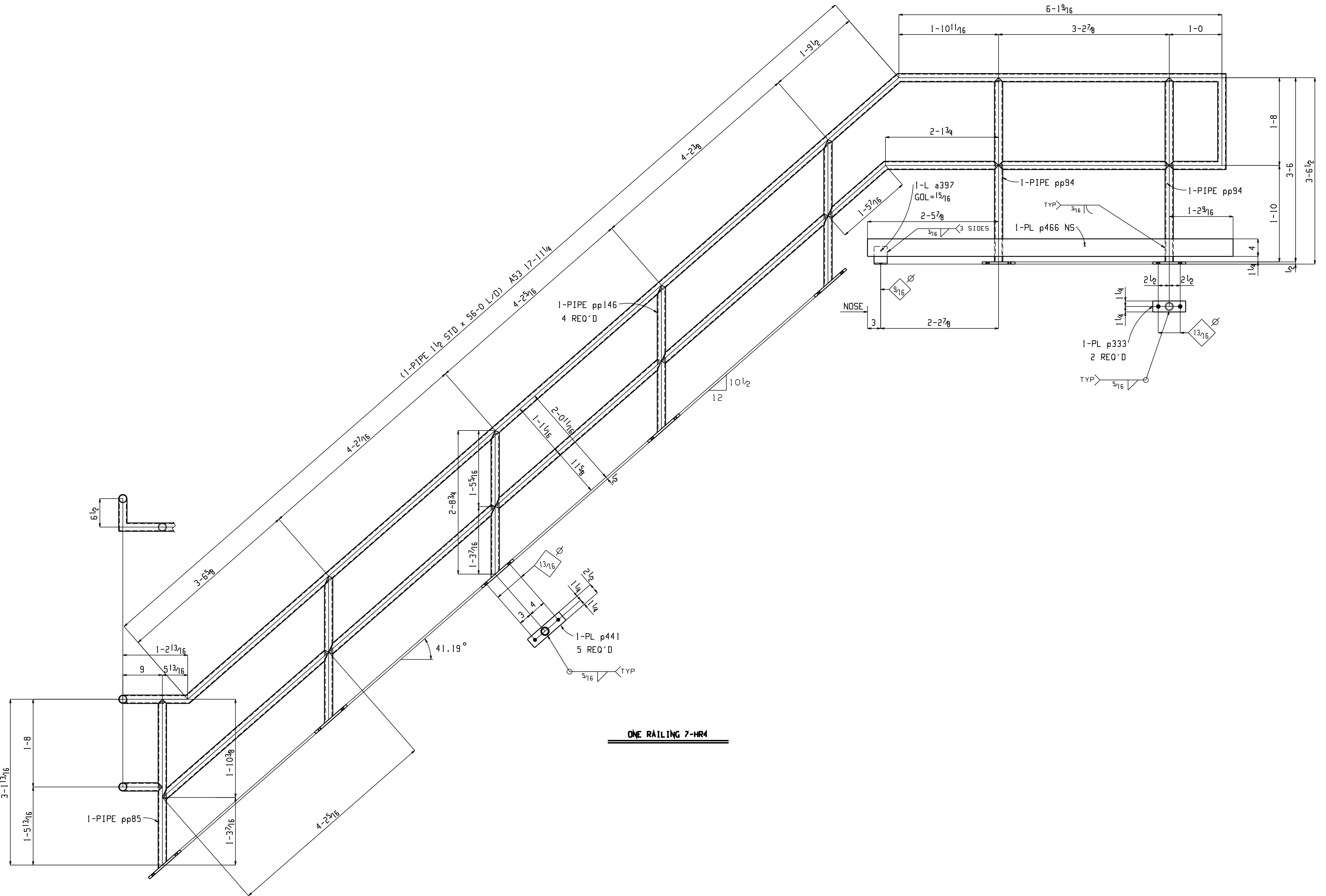
SHOP NOTES

1) ALL RUNNING DIMENSIONS ARE TAKEN FROM THE \odot LINE.
 2) ALL GAS RE-ENTRANT CUTS WILL HAVE A RADIUS OF $\frac{1}{2}$ " UNLESS NOTED
 3) ALL SHOP BOLTS SHALL BE SNUG TIGHT UNLESS NOTED

MATERIAL: ASTM A36 UNLESS NOTED
 WELD: E70XX-LH ELECTRODES
 OPEN HOLES: $1\frac{1}{16}$ UNLESS NOTED

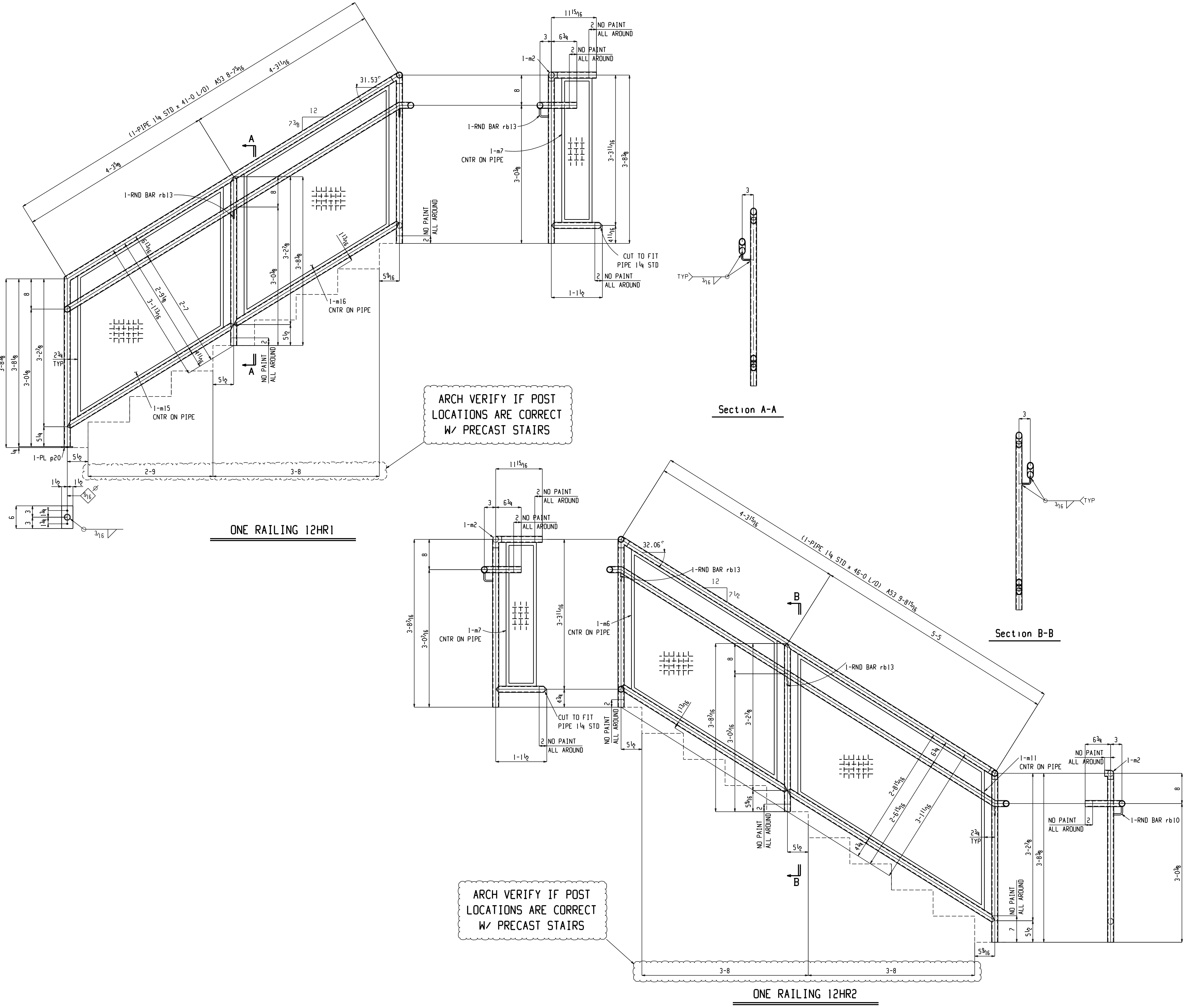
PAINT: PREP: SP3
 PRIME: 1 CT RED OXIDE
 FINISH: 1 CT SAFETY YELLOW

BOLTS: A325, GALV., HVY HEX HEAD (U.N.D.)



DRAWN BY:	DATE:	CHK'D BY:	DATE:	DWG. NO.
				JOB. NO.

Jan 19 2005 08:11:20 AM



ARCH VERIFY IF POST
LOCATIONS ARE CORRECT
W/ PRECAST STAIRS

ONE RAILING 12HR1

ARCH VERIFY IF POST
LOCATIONS ARE CORRECT
W/ PRECAST STAIRS

ONE RAILING 12HR2

BILL OF MATERIAL									
MARK	QUAN.	SHAPE	LENGTH		REMARKS	WT.	WEIGHT		
12HR1	ONE	RAILING				94	94		
12HR1	1	PIPE 1 1/4 STD	41	0	L/O A53	93	93		
p20	1	PL 1/4 X 3	0	6	A36	1	1		
rb13	2	RB 3/8	0	3 1/2	A36				
m15	1	10 GA SO MESH	3	2 1/2					
m7	1	10 GA SO MESH	0	8					
m16	1	10 GA SO MESH	3	2 3/4					
m2	1	ELL 3-WAY	0	1 1/4	#840				
		FIELD BOLTS							
	2	3/8 DIA STUD ANC	0	5 1/2					
12HR2	ONE	RAILING				104	104		
12HR2	1	PIPE 1 1/4 STD	46	0	L/O A53	104	104		
rb10	1	RB 3/8	0	4	A36				
rb13	2	RB 3/8	0	3 1/2	A36				
m6	1	10 GA SO MESH	3	2 1/2					
m7	1	10 GA SO MESH	0	8					
m11	1	10 GA SO MESH	4	1 3/4					
m2	2	ELL 3-WAY	0	1 1/4	#840				

Total weight : 198

REVISION & DISTRIBUTION BOX						
REV.	DATE	DESCRIPTION	BY	TO APP'L	TO SHOP	TO FIELD
△						
△						
△						
△						
△		ISSUED FOR APPROVAL		PDI		

- SHOP NOTES**
- ALL RUNNING DIMENSIONS ARE TAKEN FROM THE LINE.
 - ALL GAS RE-ENTRANT CUTS WILL HAVE A RADIUS OF 1/2" UNLESS NOTED
 - ALL SHOP BOLTS SHALL BE SNUG TIGHT UNLESS NOTED
- MATERIAL: ASTM A992-50 UNLESS NOTED
WELD: E70XX-LH ELECTRODES
OPEN HOLES: 1 3/4" UNLESS NOTED
PAINT: PREP: SP3
PRIME: 1 CT MODIFIED ALKYD PRIMER - TNMEC SERIES 10
FINISH: 2.0 MILS DFT
- BOLTS: 3/4" DIA., A325N, (U.N.O.)

DRAWINGS ARE SUBMITTED FOR APPROVAL IN ACCORDANCE WITH
AISC MANUAL NINTH EDITION - PAGE 5-229 PARAGRAPH 4.2
AND PAGE 5-250 SECTION 4.

DRAWN BY:	DATE:	CHK'D BY:	DATE:	JOB NUMBER	SHEET NO.
PDI					